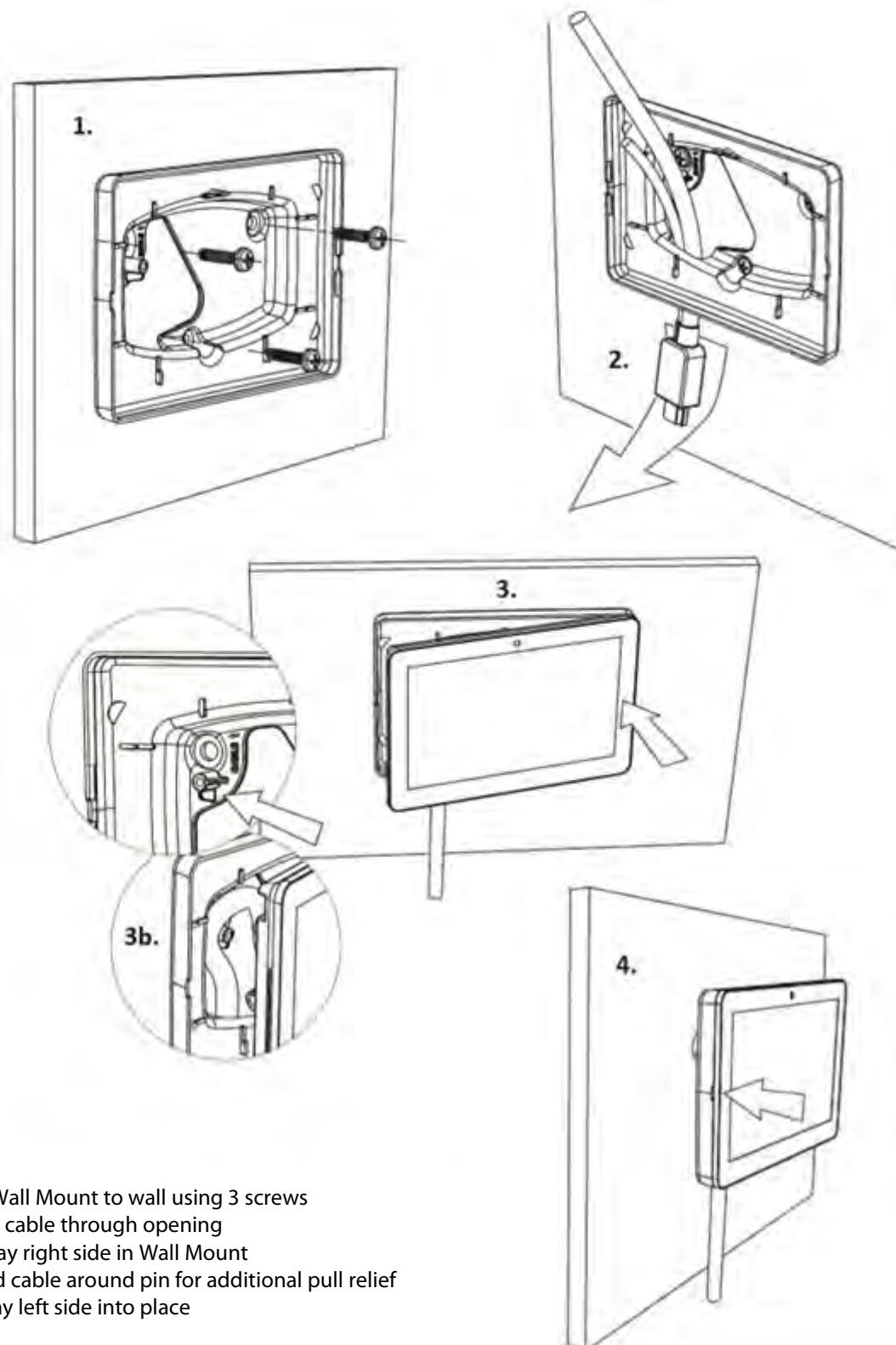


# GX Touch 50 Wall Mount

[www.victronenergy.com](http://www.victronenergy.com)

## Installation Instructions for GX Touch 50 Wall Mount (BPP900465050)



1. Assemble Wall Mount to wall using 3 screws
2. Pull display cable through opening
3. Insert display right side in Wall Mount  
*Optional:* fold cable around pin for additional pull relief
4. Press display left side into place